

KEEP TABS ON  
YOUR ELECTRICITY  
CONSUMPTION AT  
ALL TIMES

# Interface for smart meters

HmIP-ESI-IEC

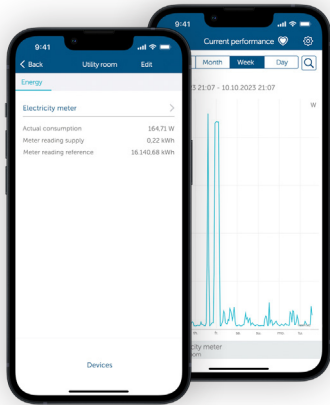
With the Homematic IP interface for gas meters you always know how much gas you are using at home. The data from the electricity meter is always displayed in the Homematic IP app in real time. The measurement data collected also enables you to monitor long-term consumption. The interface can be installed directly on your electricity meter in just a few steps.



homematic   
Smart living, simply comfortable

## ALWAYS KNOW HOW MUCH YOU ARE USING

The Homematic IP app provides you with a comprehensive overview of your energy consumption at home. In combination with the interface for smart meters, you can view the latest electricity consumption details directly on your smartphone. You can mount the device on your electricity meter very easily.



The measurement data collected also enables you to look back over your consumption levels over a longer period of time, which means you will have no surprises when your next electricity bill arrives.

And best of all, by permanently measuring the energy data in your home, any number of actions can be triggered. For example, if electricity is fed in via a connected PV system, a Homematic IP actuator can be switched on automatically so that the electricity generated is used in your home. This makes your home truly smart!

To operate the system you need to be connected to one of the following solutions:

- Homematic IP access point with free smartphone app and free cloud service
- Third-party partner solutions

### HmIP-ESI TECHNICAL DATA

Supply voltage	2x 1.5 V LR6/Mignon/AA
Battery life	5 years (typical, with ES-IEC)
Degree of protection	IP20
Ambient temperature	5 to 35°C
Dimensions (W x H x D)	39 x 109 x 29 mm
Weight	100 g (including batteries)
Transmission interval (typ.)	6 minutes
Radio frequency band	868.0-868.6 MHz 869.4-869.65 MHz
Typical range in open space	300 m

### ES-IEC TECHNICAL DATA

Supply voltage	Via evaluation unit
Ambient temperature	5 to 35°C
Dimensions (W x H x D)	32 x 40 x 20 mm
Weight (including supply cable)	52 g

## EASY MOUNTING WITHOUT PREVIOUS KNOWLEDGE

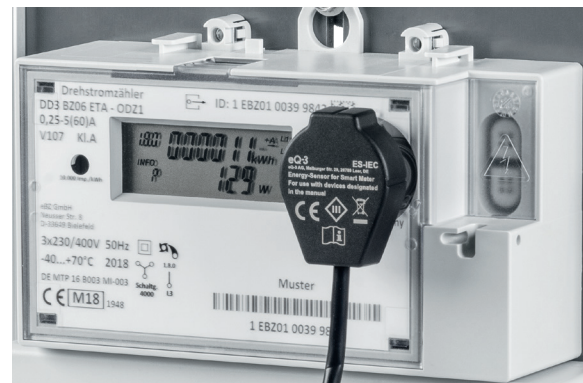
You can easily mount the interface for smart meters on your electricity meter yourself: Electronic home meters are equipped with an optical data interface in accordance with IEC 62056-21. A metal plate surrounds this information interface so that the magnetic reader head can be easily attached. The magnetic sensor is simply attached here. The sensor is then connected to the interface and integrated into your Smart Home via the app – and that's it!

## ALWAYS UP TO DATE

The latest electronic home electricity meters are usually equipped with a data interface via which you can easily read out the energy consumption data. The data is acquired by the sensor and can then be retrieved by the app.

The device is compatible with all modern measurement equipment with an information interface (mME in accordance with IEC 62056-21). The D0 Mode A to D and SML protocols are supported. The Idis CII protocol (Austria) is not supported.

All meter readings and the current performance are transmitted. The device can be used in combination with feed-in and consumption meters, bi-directional meters, single tariff meters and dual tariff meters.



Mounting on an electricity meter

### LOGISTICS DATA

Product reference	159672A0
EAN code	4047976596720
Short description	HmIP-ESI-IEC
Packing unit	48
Packaging dimensions	48 x 184 x 140 mm
Weight incl. packaging	290 g

### SCOPE OF DELIVERY

- Homematic IP interface for energy sensors
- Energy sensor for smart meters
- Double-sided adhesive strips (2x)
- 1.5 V LR6/Mignon/AA batteries (2x)
- Operating manual