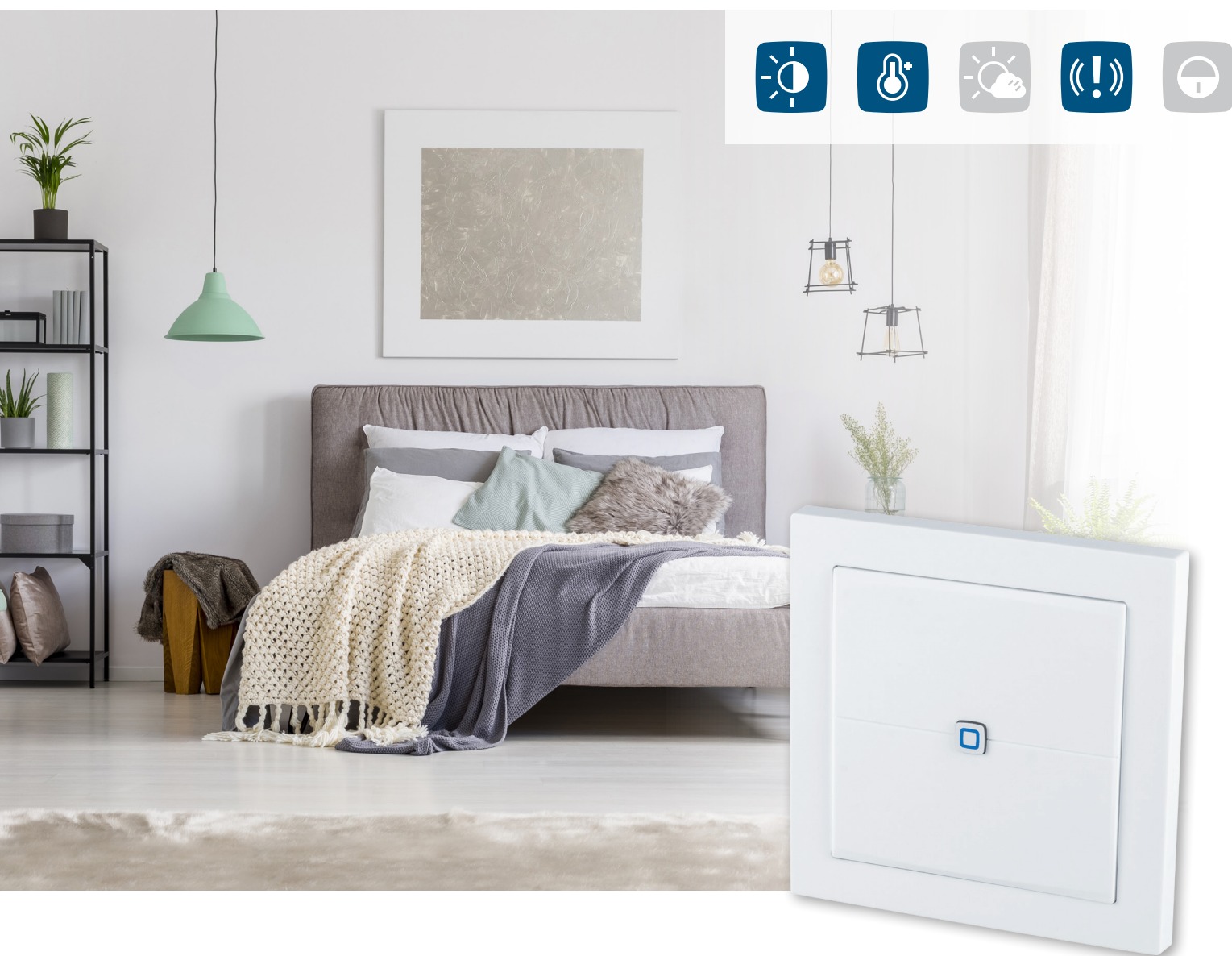


SLIM DESIGN,
MULTIFUNCTIONAL
FEATURES

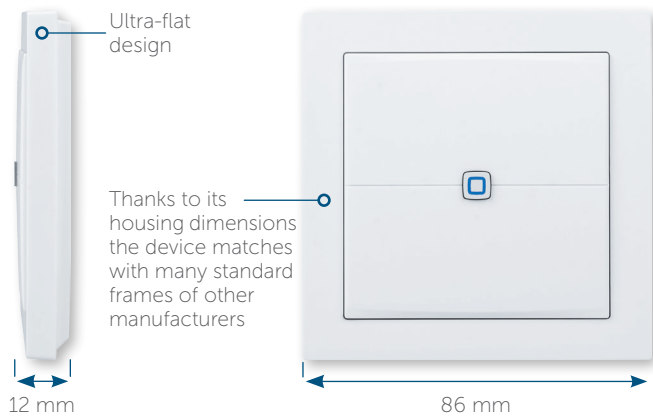
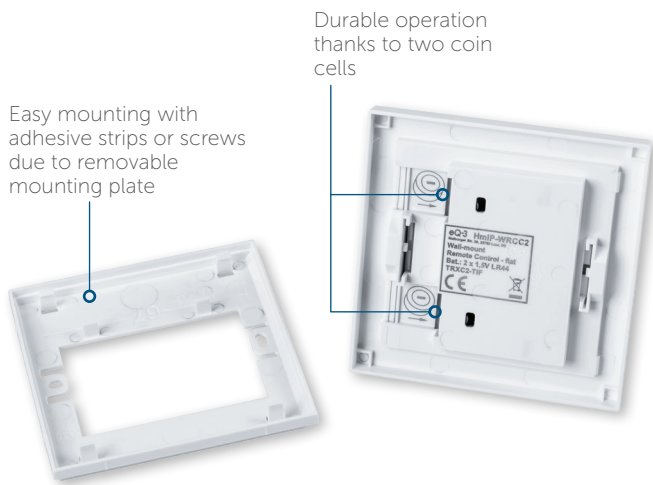
Wall-mount Remote Control – flat

HmIP-WRCC2

The flat wall-mounted remote control from Homematic IP offers flexible use and the ideal solution for every application in the smart home. One or more functions can be triggered simultaneously at the push of a button. As the device is battery operated, it can be mounted the desired location without disturbing the surroundings.



homematic 
Smart Living, Simply Exciting.



THE IDEAL FUNCTION FOR EACH APPLICATION

Two intuitive push-buttons for comfortable control of devices or system functions in your smart home: The device can be used to switch light sources on or off, activate or deactivate the eco mode or to move shutters up or down.

FLAT DESIGN, MANY DIFFERENT POSSIBILITIES

Several functions can be controlled simultaneously by just one button press. For example, install the device next to your bed: at the touch of a button, you can switch the light off and activate the protection mode at the same time. This creates a secure feeling in the smart home even at night.

QUICK AND EASY INSTALLATION

Easy installation without any wiring effort thanks to battery operation and radio communication. The device can be placed where it is needed. It is ideal for mounting on walls, glass or furniture, for example, without the need to lay any power cables. Only the supplied adhesive strips are required for installation. Thanks to residue-free removal of the adhesive strips, the wall-mount remote control is suitable even for rented property.

Operation requires connection to one of the following solutions:

- Homematic IP Access Point with free smartphone app and free cloud service
- Central Control Unit CCU2/CCU3 with the local user interface WebUI
- Third-party solutions of partners

TECHNICAL SPECIFICATIONS

Supply voltage	2x 1.5 V LR44 batteries
Current consumption	50 mA max.
Battery life	3 years (typ.)
Degree of protection	IP20
Ambient temperature	5 to 35 °C
Dimensions (W x H x D)	86 x 86 x 12 mm
Weight	72 g
Radio frequency band	868.0-868.6 MHz 869.4-869.65 MHz
Typ. open area RF range	250 m

LOGISTICAL DATA

Product reference	155342A0
EAN code	4047976553426
Short description	HmlP-WRCC2
Packing unit	90
Packing dimensions	122 x 112 x 48 mm
Weight incl. packaging	141.4 g

PACKAGE CONTENTS

Homematic IP Wall-mount Remote Control – flat
 Wall mounting bracket
 1.5 V LR44 batteries (2x)
 Mounting accessories
 User manual