

**VARIOUS  
FUNCTIONS  
IN ONE DEVICE**

# Wired Wall-mount Remote Control – 2 buttons

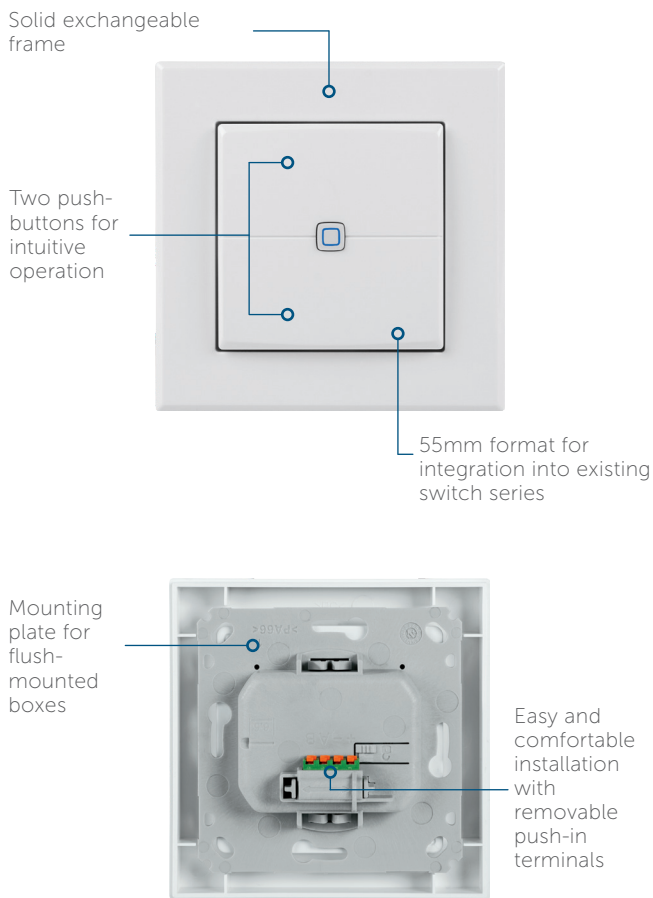
HmIPW-WRC2 | HmIPW-WRC2-A

The flexible wall-mount remote control offers the right solution for every application in the smart home. One or more functions can be triggered simultaneously at the push of a button. The device can, for example, be used for switching light sources on and off or for activating and deactivating the eco mode of radiators, ideal when leaving or entering the house.



Available in white and anthracite

homematic <sup>IP</sup>  
wired



The wired system can be controlled via the free Homematic IP app, the WebUI interface of the CCU3 or via various partner solutions.

- For operation of the wired system, the Homematic IP Wired Access Point is required.

## THE IDEAL FUNCTION FOR EACH APPLICATION

Two intuitive push-buttons for comfortable control of devices or system functions in your smart home: Can be used e.g. for switching lights on and off or for moving shutters up and down.

## PERFECT SOLUTION FOR ENTRANCE AREAS

At the push of a button, multiple Homematic IP devices and functions can be controlled at the same time. When leaving the house, you can for example switch off all the lights or activate the eco mode for your radiators. Activating or deactivating of the protection mode via the wall-mount remote control also ensures a secure feeling in the smart home.

## POWER SUPPLY VIA THE WIRED BUS

Connection is established via the wired bus for reliable power supply and secure communication between the devices.

## EASY INTEGRATION INTO EXISTING DESIGN

The wall-mount remote control is easily integrated into existing switches with 55 mm frames of leading manufacturers (an overview of compatible manufacturers is available at [www.homematic-ip.com](http://www.homematic-ip.com)).

## FIRM HOLD ON FLUSH-MOUNTED BOXES

Optimised for easy installation on flush-mounted boxes using the supplied mounting plate. The removable push-in terminal with spring tension clamps offers easy connection to the wired bus.

## TECHNICAL SPECIFICATIONS

Supply voltage	24 VDC, +5 % -20 %, SELV
Current consumption	6 mA max.
Standby power consumption	41 mW
Installation	only in normal commercial switch boxes (device boxes) in accordance with DIN 49073-1
Cable type and cross section	rigid cable, 0.12-0.50 mm <sup>2</sup>
Degree of protection	IP20
Ambient temperature	-5 to +40 °C
Dimensions (W x H x D)	
Without frame	55 x 55 x 39 mm
Including frame	86 x 86 x 39 mm
Weight	72 g

## LOGISTICAL DATA

Version	White	Anthracite
Product reference	154286A0	159891A0
EAN code	4047976542864	4047976598915
Short description	HmIPW-WRC2	HmIPW-WRC2-A
Packing unit	90	90
Packing dimensions	122 x 112 x 48 mm	122 x 112 x 48 mm
Weight incl. packaging	193,5 g	193,5 g

## PACKAGE CONTENTS

Homematic IP Wired Wall-mount Remote Control – 2 channels  
 Clip-on frame and mounting plate  
 Screws (4x)  
 User manual